

Postal Code 78628

Residential Statistics



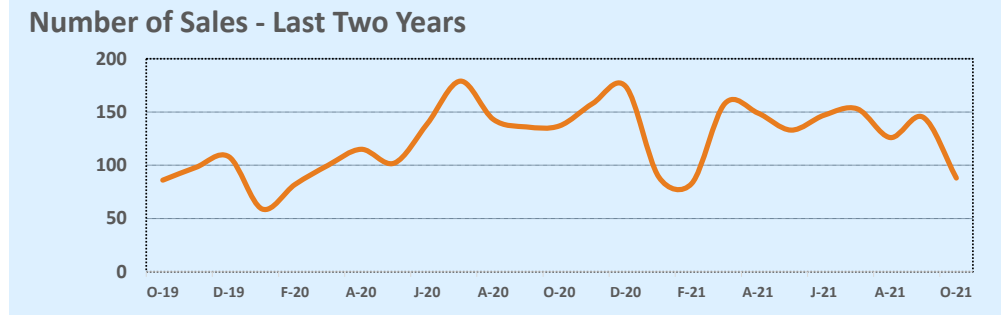
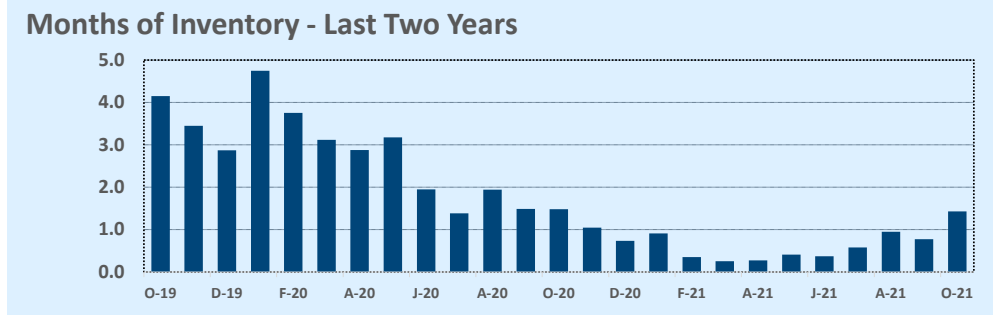
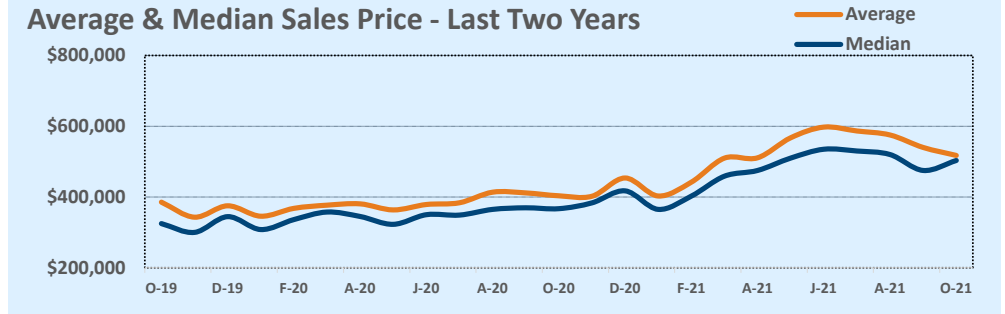
October 2021

Listings	This Month			Year-to-Date		
	Oct 2021	Oct 2020	Change	2021	2020	Change
Single Family Sales	82	135	-39.3%	1,214	1,180	+2.9%
Condo/TH Sales	6	2	+200.0%	57	12	+375.0%
Total Sales	88	137	-35.8%	1,271	1,192	+6.6%
New Homes Only	14	24	-41.7%	121	236	-48.7%
Resale Only	74	113	-34.5%	1,150	956	+20.3%
Sales Volume	\$45,538,444	\$55,267,899	-17.6%	\$678,576,066	\$460,826,146	+47.3%
New Listings	122	144	-15.3%	1,367	1,410	-3.0%
Pending	--	--	--	--	--	--
Withdrawn	1	5	-80.0%	8	69	-88.4%
Expired	1	5	-80.0%	8	69	-88.4%
Months of Inventory	1.4	1.5	-3.4%	N/A	N/A	--

Price Range	This Month			Year-to-Date		
	New	Sales	DOM	New	Sales	DOM
\$149,999 or under	--	--	--	2	2	18
\$150,000- \$199,999	--	--	--	5	5	21
\$200,000- \$249,999	1	1	3	11	10	15
\$250,000- \$299,999	2	2	26	45	62	32
\$300,000- \$349,999	6	10	10	102	140	31
\$350,000- \$399,999	18	11	28	184	159	17
\$400,000- \$449,999	16	8	12	177	163	21
\$450,000- \$499,999	19	10	20	184	142	26
\$500,000- \$549,999	16	10	20	132	127	19
\$550,000- \$599,999	16	11	41	141	108	17
\$600,000- \$699,999	15	12	27	158	138	19
\$700,000- \$799,999	5	10	22	101	88	32
\$800,000- \$899,999	2	2	11	51	57	17
\$900,000- \$999,999	--	--	--	20	24	18
\$1M - \$1.99M	6	1	5	49	42	28
\$2M - \$2.99M	--	--	--	3	4	30
\$3M+	--	--	--	2	--	--
Totals	122	88	22	1,367	1,271	23

Average	This Month			Year-to-Date		
	Oct 2021	Oct 2020	Change	2021	2020	Change
List Price	\$515,607	\$406,965	+26.7%	\$512,229	\$391,873	+30.7%
List Price/SqFt	\$222	\$166	+33.8%	\$202	\$159	+26.9%
Sold Price	\$517,482	\$403,415	+28.3%	\$533,891	\$386,599	+38.1%
Sold Price/SqFt	\$223	\$165	+35.3%	\$211	\$157	+34.2%
Sold Price / Orig LP	100.5%	99.3%	+1.2%	104.7%	98.9%	+5.9%
Days on Market	22	45	-50.2%	23	70	-67.6%

Median	This Month			Year-to-Date		
	Oct 2021	Oct 2020	Change	2021	2020	Change
List Price	\$507,192	\$369,000	+37.5%	\$450,000	\$355,890	+26.4%
List Price/SqFt	\$222	\$158	+40.4%	\$196	\$155	+26.5%
Sold Price	\$503,197	\$366,990	+37.1%	\$480,000	\$352,500	+36.2%
Sold Price/SqFt	\$222	\$159	+40.3%	\$205	\$153	+34.5%
Sold Price / Orig LP	100.0%	99.7%	+0.3%	101.5%	99.2%	+2.3%
Days on Market	9	23	-60.9%	6	41	-85.4%



Based on information from the Austin Board of REALTORS® (alternatively, from ACTRIS). Neither the Board nor ACTRIS guarantees or is in any way responsible for its accuracy. The Austin Board of REALTORS®, ACTRIS and their affiliates provide the MLS and all content therein "AS IS" and without any warranty, express or implied. Data maintained by the Board or ACTRIS may not reflect all real estate activity in the market.